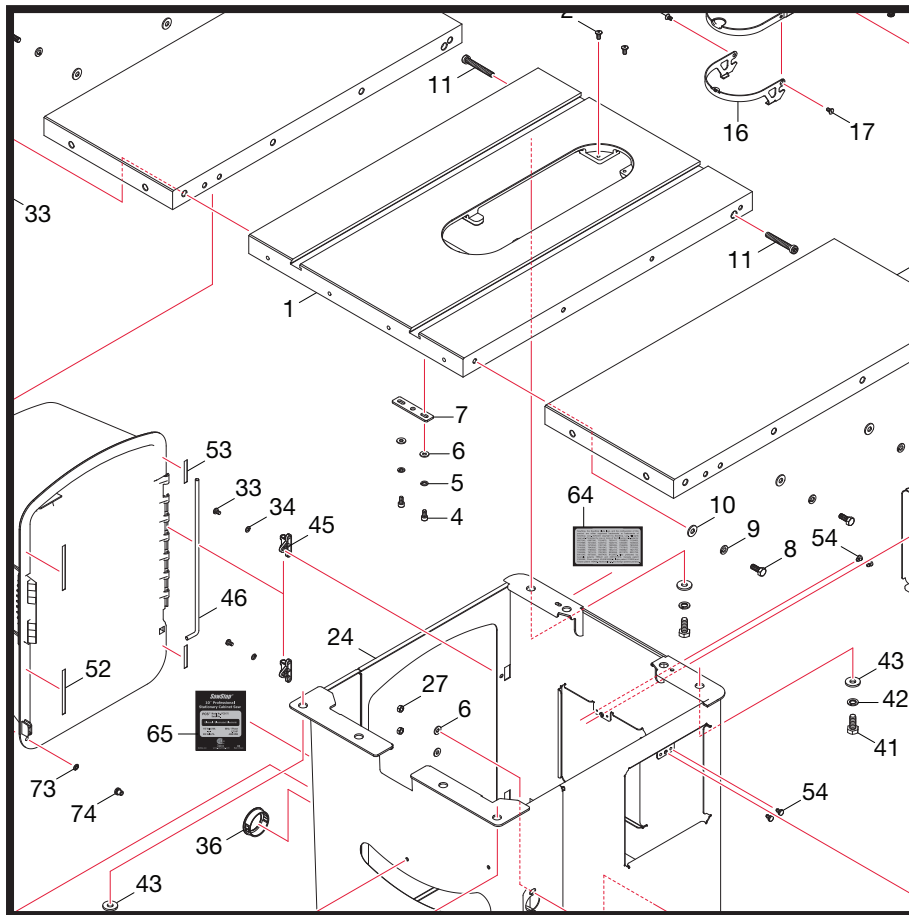




Models PCS31230, PCS31230-AU

# 10" Professional Cabinet Saw

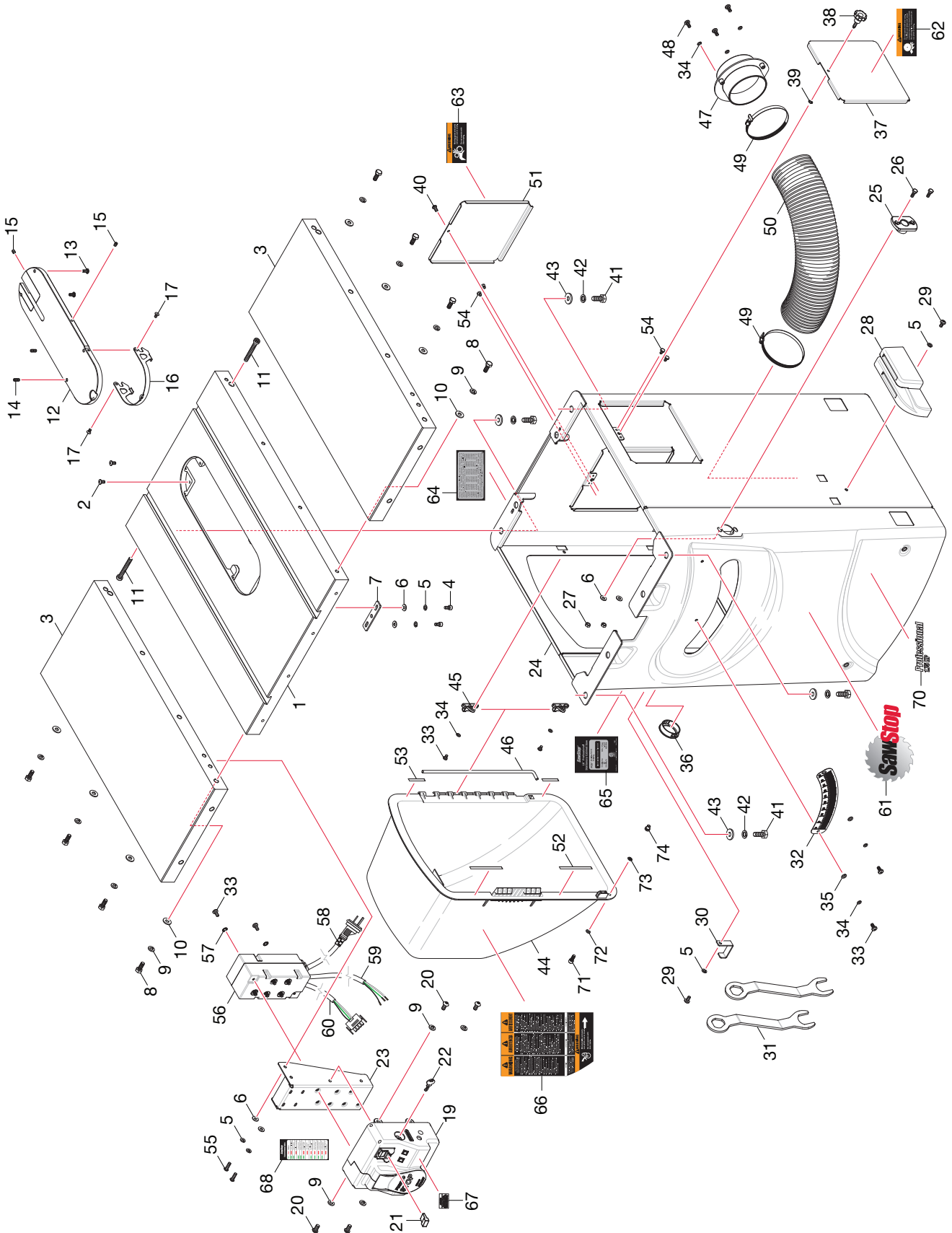
## Parts List



|   |    |
|---|----|
| Cabinet and Table Exploded View .....           | 3  |
| Cabinet and Table Parts List .....              | 4  |
| Internal Assembly Exploded View .....           | 6  |
| Internal Assembly Parts List .....              | 7  |
| Arbor Assembly Exploded View .....              | 10 |
| Arbor Asembly Parts List .....                  | 11 |
| Blade Guard and Miter Gauge Exploded View ..... | 13 |
| Blade Guard and Miter Gauge Parts List .....    | 14 |
| Literature, Hardware and Tools Parts List ..... | 15 |



# Cabinet and Table Exploded View



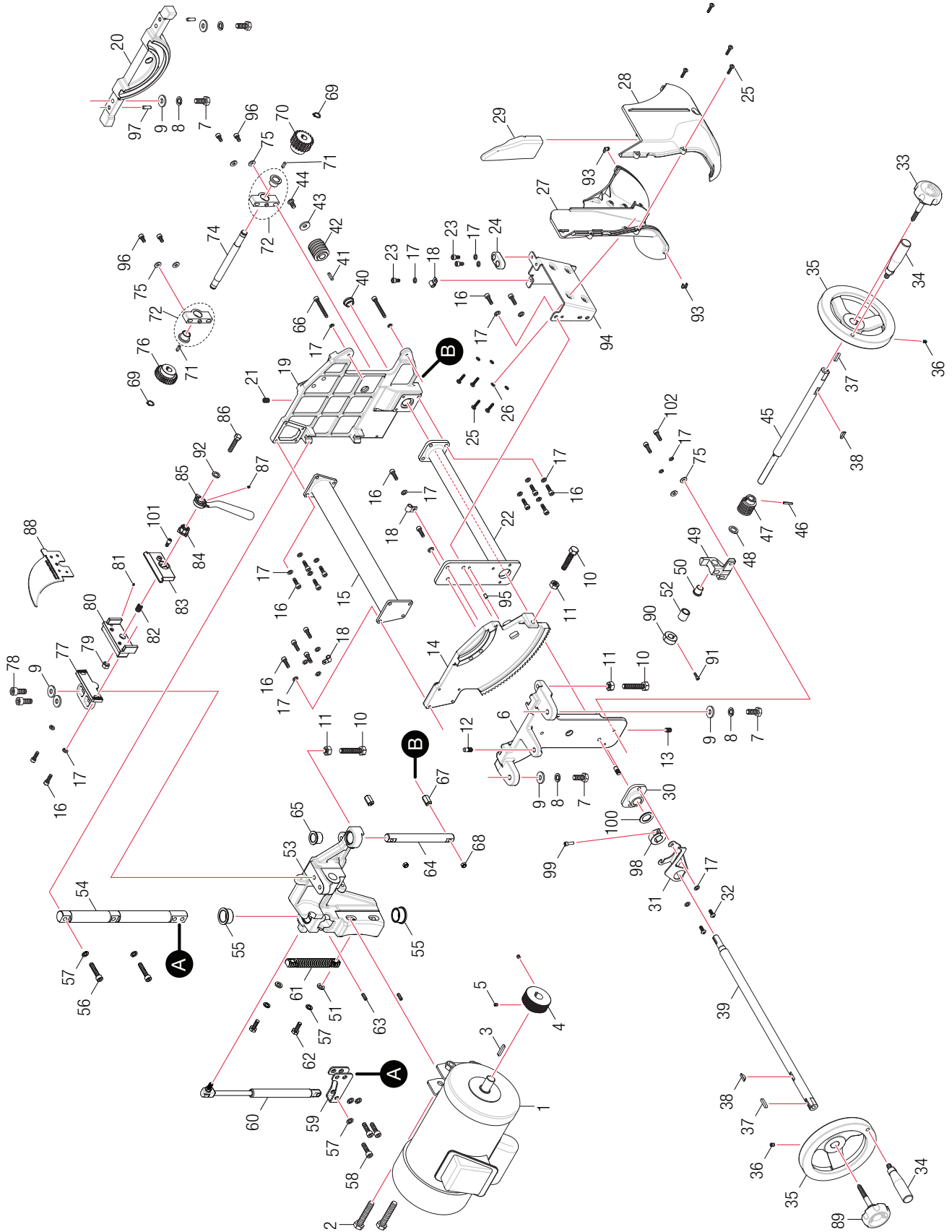
## Cabinet and Table Parts List

| No. | Description                                       | Part No. | Qty. |
|-----|---|----------|------|
| 1   | Table   | PCS-001  | 1    |
| 2   | Rear Lock Down Screw for Insert                   | PCS-002  | 2    |
| 3   | Cast Iron Extension Wing                          | PCS-003  | 2    |
| 4   | M6x1.0x12 Socket Cap Screw                        | PCS-004  | 2    |
| 5   | M6 Lock Washer                                    | PCS-005  | 6    |
| 6   | M6x15x1.5 Washer                                  | PCS-006  | 6    |
| 7   | Table Alignment Bracket                           | PCS-007  | 1    |
| 8   | M8x1.25x20 Hex Head Bolt                          | PCS-008  | 8    |
| 9   | M8 Lock Washer                                    | PCS-009  | 12   |
| 10  | M8x20x2 Washer                                    | PCS-010  | 8    |
| 11  | M6x1.0x50 Socket Cap Screw                        | PCS-244  | 2    |
| 12  | Standard Insert Assembly (includes items 13-18)   | TSI-SLD  | 1    |
| 13  | Rear Leveling Screw                               | PCS-013  | 2    |
| 14  | M6x1.0x14 Set Screw                               | PCS-014  | 2    |
| 15  | M6x1.0x8 Set Screw                                | PCS-015  | 2    |
| 16  | Table Insert Lock-Down Lever                      | PCS-253  | 1    |
| 17  | M4x0.7x10 Flat Head Phillips Screw                | PCS-017  | 2    |
| 19  | Switch Box Assembly (includes items 21-22, 67-68) | PCS-019  | 1    |
| 20  | M8x1.25x12 Button Head Socket Screw               | PCS-020  | 4    |
| 21  | Switch Box Lock Out Key                           | PCS-021  | 1    |
| 22  | Bypass Key  | PCS-022  | 1    |
| 23  | Switch Box Mounting Bracket                       | PCS-023  | 1    |
| 24  | Cabinet   | PCS-024  | 1    |
| 25  | Tilt Shaft Mounting Bracket                       | PCS-025  | 1    |
| 26  | M6x1.0x15 Hex Head Bolt                           | PCS-026  | 2    |
| 27  | M6x1.0 Hex Nut                                    | PCS-027  | 2    |
| 28  | Accessory Tool Holder                             | PCS-028  | 1    |
| 29  | M6x1.0x12 Button Head Socket Screw                | PCS-029  | 2    |
| 30  | Blade Wrench Holder                               | PCS-030  | 1    |
| 31  | Blade Wrench                                      | PCS-031  | 2    |
| 32  | Tilt Angle Scale                                  | PCS-032  | 1    |
| 33  | M5x0.8x10 Pan Head Phillips Screw                 | PCS-033  | 6    |
| 34  | M5 Lock Washer                                    | PCS-034  | 7    |
| 35  | M5x10x1 Washer                                    | PCS-035  | 2    |
| 36  | Switch Box Cable Grommet                          | PCS-036  | 1    |
| 37  | Side Cabinet Access Door                          | PCS-037  | 1    |
| 38  | Cabinet Access Door Lock Knob                     | PCS-038  | 1    |
| 39  | M6 Push Nut                                       | PCS-039  | 1    |
| 40  | M6x1.0x10 Button Head Socket Screw                | PCS-040  | 1    |
| 41  | M10x1.5x25 Hex Head Bolt                          | PCS-041  | 4    |

## Cabinet and Table Parts List (cont.)

| No. | Description   | Part No.   | Qty. |
|-----|---|------------|------|
| 42  | M10 Lock Washer   | PCS-042    | 4    |
| 43  | M10x25x3 Washer   | PCS-043    | 4    |
| 44  | Motor Cover   | PCS-044    | 1    |
| 45  | Motor Cover Mounting Bracket                              | PCS-045    | 2    |
| 46  | Motor Cover Rod   | PCS-046    | 1    |
| 47  | Dust Collection Port                                      | PCS-047    | 1    |
| 48  | M5x3x15 Button Head Phillips Screw                        | PCS-048    | 3    |
| 49  | Hose Clamp  | PCS-049    | 2    |
| 50  | Dust Collection Hose                                      | PCS-050    | 1    |
| 51  | Rear Cabinet Access Door                                  | PCS-051    | 1    |
| 52  | Motor Cover Foam Large                                    | PCS-052    | 2    |
| 53  | Motor Cover Foam Small                                    | PCS-053    | 2    |
| 54  | Access Door Rubber Pad                                    | PCS-054    | 4    |
| 55  | M6x1.0x20 Button Head Socket Screw                        | PCS-055    | 2    |
| 56  | 230V Contactor Box (PCS31230)                             | PCS-056    | 1    |
|     | 220V Contactor Box (PCS31230-KR)                          | PCS-WA-033 |      |
|     | 230V Contactor Box (PCS31230-CH)                          | PCS-WA-035 |      |
|     | 230V Contactor Box (PCS31230-AU)                          | PCS-WA-040 |      |
| 57  | M5 External Tooth Lock Washer                             | PCS-058    | 2    |
| 58  | Main Power Cable (PCS31230)                               | PCS-059    | 1    |
|     | Main Power Cable (PCS31230-CH)                            | PCS-266    |      |
| 59  | Motor Cable Assembly                                      | PCS-060    | 1    |
| 60  | Motor Control Cable Assembly                              | PCS-061    | 1    |
| 61  | SawStop Label   | PCS-062    | 1    |
| 62  | Blade Retraction Warning Label                            | PCS-063    | 1    |
| 63  | Gear Warning Label  | PCS-064    | 1    |
| 64  | Patent Label  | PCS-065    | 1    |
| 65  | Specification Label (PCS31230)                            | PCS-066    | 1    |
|     | Specification Label (PCS31230-KR)                         | PCS-267    |      |
|     | Specification Label (PCS31230-CH)                         | PCS-264    |      |
|     | Specification Label (PCS31230-AU)                         | PCS-269    |      |
| 66  | Main Warning Label  | PCS-068    | 1    |
| 67  | Main Power Label  | PCS-069    | 1    |
| 68  | System Status Label                                       | PCS-070    | 1    |
| 70  | Professional 3HP Model Label                              | PCS-260    | 1    |
| 71  | M6x1.0x20 Custom Socket Head Cap Screw (PCS31230-AU only) | PCS-270    | 1    |
| 72  | M6x13x1.5 Washer (PCS31230-AU only)                       | PCS-271    | 1    |
| 73  | M6 Push Nut (PCS31230-AU only)                            | PCS-272    | 1    |
| 74  | M6x1.0 Threaded Rivet Bushing (PCS31230-AU only)          | PCS-273    | 1    |

# Internal Assembly Exploded View



# Internal Assembly Parts List

| No. | Description   | Part No. | Qty. |
|-----|---|----------|------|
| 1   | 3 HP, 1 PH, 230V, 60Hz, TEFC Motor (PCS31230 and PCS31230-KR)   | PCS-072  | 1    |
|     | 3HP, 1 PH, 230V, 50Hz, TEFC Motor (PCS31230-CH and PCS32130-AU) | PCS-265  |      |
| 2   | M12x1.75x65 Hex Head Bolt                                       | PCS-074  | 2    |
| 3   | M5x5x30 Key   | PCS-075  | 1    |
| 4   | Motor Pulley (PCS31230 and PCS31230-KR)                         | PCS-076  | 1    |
|     | Motor Pulley (50 Hz motors only - PCS31230-CH and PCS31230-AU)  | PCS-262  |      |
| 5   | M6x1.0x8 Set Screw  | PCS-078  | 2    |
| 6   | Front Trunnion Bracket  | PCS-079  | 1    |
| 7   | M10x1.5x25 Hex Head Bolt  | PCS-080  | 4    |
| 8   | M10 Lock Washer   | PCS-081  | 4    |
| 9   | M10x25x3 Washer   | PCS-082  | 6    |
| 10  | M10x1.5x30 Hex Head Bolt  | PCS-083  | 3    |
| 11  | M10x1.5 Hex Jam Nut   | PCS-084  | 3    |
| 12  | M8x20 Pin   | PCS-085  | 2    |
| 13  | M8x1.25x16 Set Screw  | PCS-086  | 1    |
| 14  | Front Trunnion  | PCS-087  | 1    |
| 15  | Upper Torque Tube   | PCS-088  | 1    |
| 16  | M6x1.0x20 Socket Cap Screw                                      | PCS-089  | 18   |
| 17  | M6 Lock Washer  | PCS-090  | 27   |
| 18  | Cable Clamp   | PCS-091  | 3    |
| 19  | Rear Trunnion   | PCS-092  | 1    |
| 20  | Rear Trunnion Bracket   | PCS-093  | 1    |
| 21  | M8x1.0x20 Set Screw   | PCS-094  | 1    |
| 22  | Lower Torque Tube   | PCS-095  | 1    |
| 23  | M6x1.0x12 Socket Cap Screw                                      | PCS-096  | 3    |
| 24  | Rubber Bumper   | PCS-097  | 1    |
| 25  | M5x2.2x20 Button Head Phillips Screw                            | PCS-098  | 8    |
| 26  | M5 Lock Washer  | PCS-099  | 4    |
| 27  | Dust Shroud (inner half)  | PCS-100  | 1    |
| 28  | Dust Shroud (outer half)  | PCS-101  | 1    |
| 29  | Dust Shroud Blast Shield  | PCS-102  | 1    |
| 30  | Elevation Control Shaft Front Bushing                           | PCS-103  | 1    |
| 31  | Tilt Indicator  | PCS-104  | 1    |
| 32  | M6x1.0x15 Button Head Socket Screw                              | PCS-105  | 2    |
| 33  | Tilt Handwheel Lock Knob  | PCS-106  | 1    |
| 34  | Handwheel Handle  | PCS-107  | 2    |
| 35  | Handwheel   | PCS-108  | 2    |
| 36  | M6x1.0x8 Set Screw  | PCS-109  | 2    |
| 37  | M5x5x25 Key   | PCS-110  | 2    |
| 38  | Control Shaft Key   | PCS-111  | 2    |
| 39  | Elevation Control Shaft   | PCS-245  | 1    |

## Internal Assembly Parts List (cont.)

| No. | Description                                  | Part No.         | Qty. |
|-----|--|------------------|------|
| 40  | Elevation Control Shaft Rear Bushing         | PCS-246          | 1    |
| 41  | M4x4x20 Key                                  | PCS-114          | 1    |
| 42  | Elevation Control Worm                       | PCS-115          | 1    |
| 43  | M8x23x2 Hardened Washer                      | PCS-116          | 1    |
| 44  | M8x1.25x16 Button Head Socket Screw          | PCS-117          | 1    |
| 45  | Tilt Control Shaft                           | PCS-118          | 1    |
| 46  | M4x20 Spring Pin                             | PCS-119          | 1    |
| 47  | Tilt Control Worm                            | PCS-120          | 1    |
| 48  | M12x21x2 Washer                              | PCS-121          | 1    |
| 49  | Tilt Control Worm Adjustment Bracket         | PCS-122          | 1    |
| 50  | Tilt Control Worm Adjustment Bracket Bushing | PCS-123          | 1    |
| 51  | M8x16x2 Washer                               | PCS-124          | 2    |
| 52  | Tilt Control Shaft Spacer                    | PCS-125          | 1    |
| 53  | Elevation Plate                              | PCS-126          | 1    |
| 54  | Primary Elevation Shaft                      | PCS-127          | 1    |
| 55  | Primary Elevation Shaft Bushing              | PCS-128          | 2    |
| 56  | M8x1.25x40 Socket Cap Screw                  | PCS-129          | 2    |
| 57  | M8 Lock Washer                               | PCS-130          | 7    |
| 58  | M8x1.25x30 Socket Cap Screw                  | PCS-131          | 3    |
| 59  | Gas Spring Mounting Bracket                  | PCS-132          | 1    |
| 60  | Gas Spring (PCS31230)                        | PCS-133          | 1    |
| 61  | Elevation Threaded Rod                       | PCS-134          | 1    |
| 62  | M8x1.25x25 Hex Head Bolt                     | PCS-135          | 2    |
| 63  | M6x1.0x16 Set Screw                          | PCS-136          | 2    |
| 64  | Secondary Elevation Shaft                    | PCS-137          | 1    |
| 65  | Secondary Elevation Shaft Bushing            | PCS-138          | 1    |
| 66  | M6x1.0x55 Socket Cap Screw                   | PCS-139          | 2    |
| 67  | Secondary Elevation Shaft Standoff           | PCS-140          | 2    |
| 68  | M6x1.0 Lock Nut                              | PCS-141          | 2    |
| 69  | M13 External Retaining Ring                  | PCS-142          | 2    |
| 70  | Elevation Worm Gear                          | PCS-143          | 1    |
| 71  | M4x4x15 Key                                  | PCS-144          | 2    |
| 72  | Elevation Gear Shaft Mounting, Replacement   | PCS-145, PCS-146 | 2    |
| 74  | Elevation Gear Shaft                         | PCS-147          | 1    |
| 75  | M6x15x1.5 Washer                             | PCS-148          | 6    |
| 76  | Elevation Pinion Gear                        | PCS-149          | 1    |
| 77  | Spreader Mounting Plate                      | PCS-150          | 1    |
| 78  | M10x1.5x25 Socket Cap Screw                  | PCS-151          | 2    |
| 79  | M8x1.0 Hex Nut                               | PCS-152          | 1    |
| 80  | Spreader Positioning Plate                   | PCS-153          | 1    |

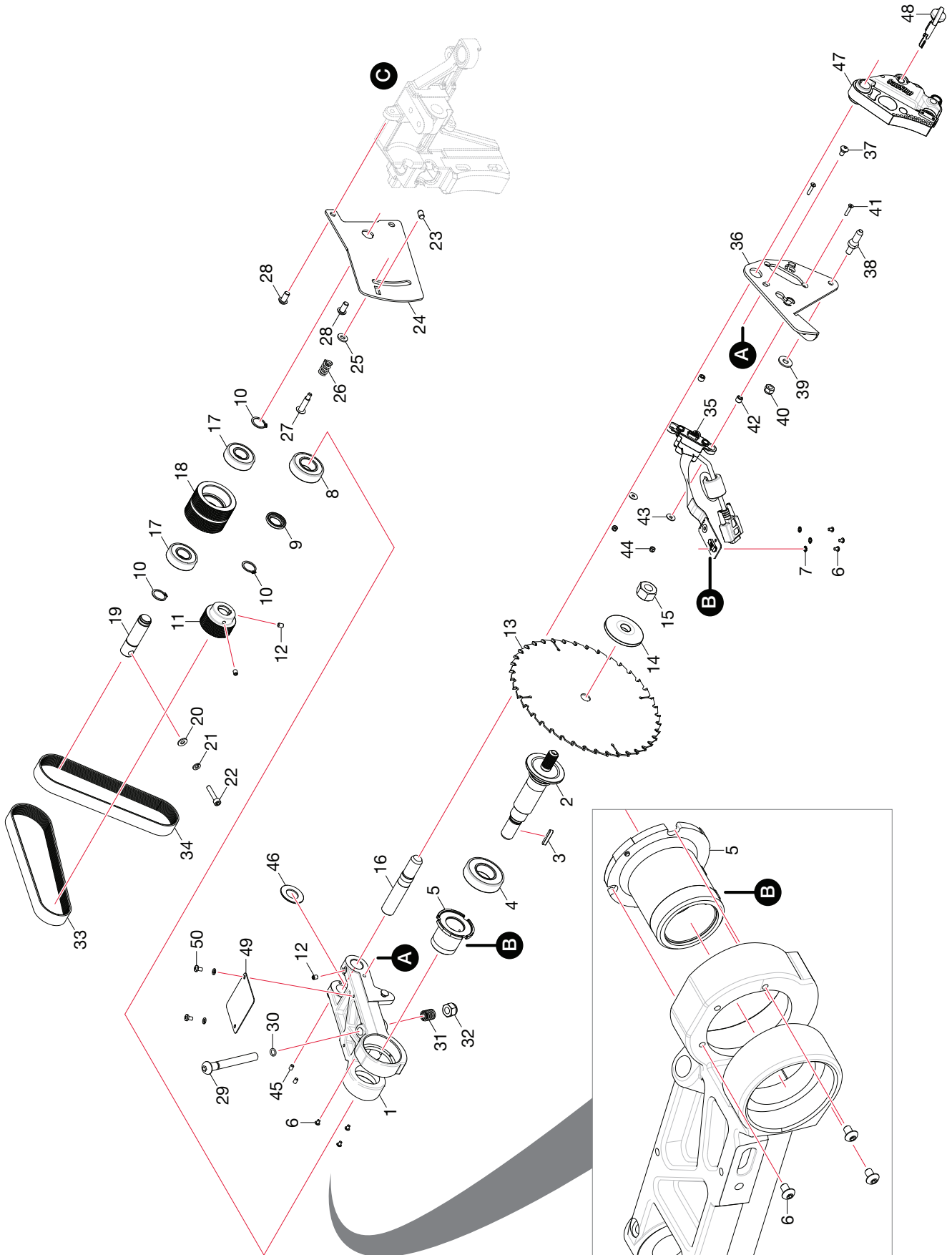


## Internal Assembly Parts List (cont.)

| No. | Description  | Part No. | Qty. |
|-----|--|----------|------|
| 81  | M3x0.5x6 Set Screw (for saws with a serial number prior to P154900001) | PCS-154  | 1    |
|     | M4x0.7x6 Set Screw (for saws with a serial number P154900001 or later) | PCS-274  |      |
| 82  | Clamp Spring   | PCS-155  | 1    |
| 83  | Clamping Plate   | PCS-156  | 1    |
| 84  | Clamping Plate Cam Bushing   | PCS-157  | 1    |
| 85  | Clamp Handle   | PCS-158  | 1    |
| 86  | M8x1.0x40 Hex Head Bolt  | PCS-159  | 1    |
| 87  | M4x0.7x6 Set Screw   | PCS-160  | 1    |
| 88  | Riving Knife   | PCS-161  | 1    |
| 89  | Elevation Handwheel Lock Knob  | PCS-162  | 1    |
| 90  | Tilt Control Shaft Collar  | PCS-163  | 1    |
| 91  | M4x0.7x10 Socket Cap Screw   | PCS-164  | 1    |
| 92  | M8 Polyurethane O-Ring   | PCS-165  | 1    |
| 93  | Dust Shroud Clip   | PCS-166  | 2    |
| 94  | Dust Shroud Mounting Bracket   | PCS-167  | 1    |
| 95  | M5.2x10 Spring Pin   | PCS-168  | 1    |
| 96  | M6x1.0x30 Socket Cap Screw   | PCS-169  | 4    |
| 97  | M6x22 Pin  | PCS-242  | 2    |
| 98  | Elevation Control Shaft Collar   | PCS-247  | 1    |
| 99  | M5x0.8x16 Socket Cap Screw   | PCS-248  | 1    |
| 100 | M20x32x2 Washer  | PCS-249  | 1    |
| 101 | M6x1.0x10 Custom Set Screw   | PCS-250  | 1    |
| 102 | M6x1.0x25 Socket Cap Screw   | PCS-261  | 2    |



# Arbor Assembly Exploded View



# Arbor Assembly Parts List

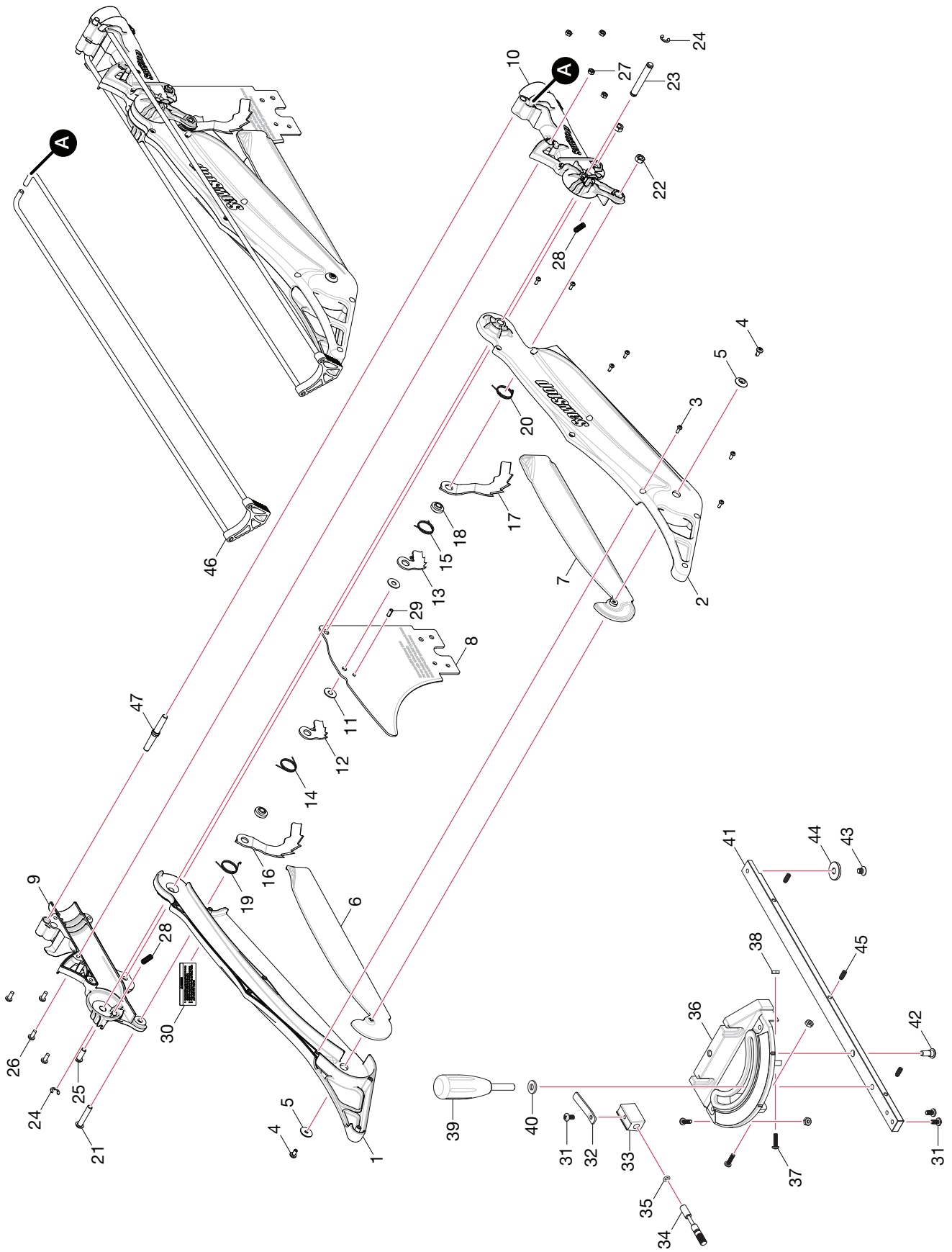
| No. | Description                          | Part No. | Qty. |
|-----|--------------------------------------|----------|------|
| 1   | Arbor Block                          | PCS-170  | 1    |
| 2   | Arbor                                | PCS-171  | 1    |
| 3   | M5x5x30 Key                          | PCS-172  | 1    |
| 4   | Main Arbor Bearing                   | PCS-173  | 1    |
| 5   | Electrode Shell                      | PCS-174  | 1    |
| 6   | M4x0.7x6 Button Head Socket Screw    | PCS-175  | 6    |
| 7   | M4 External Tooth Lock Washer        | PCS-176  | 3    |
| 8   | Second Arbor Bearing                 | PCS-177  | 1    |
| 9   | Arbor Spacer                         | PCS-178  | 1    |
| 10  | M20 External Retaining Ring          | PCS-179  | 3    |
| 11  | Arbor Pulley                         | PCS-180  | 1    |
| 12  | M6x1.0x8 Set Screw                   | PCS-181  | 3    |
| 13  | 10" Combination Saw Blade            | PCS-182  | 1    |
| 14  | Arbor Washer                         | PCS-183  | 1    |
| 15  | Arbor Nut                            | PCS-184  | 1    |
| 16  | Pivot Shaft                          | PCS-185  | 1    |
| 17  | Double Pulley Bearing                | PCS-186  | 2    |
| 18  | Double Pulley                        | PCS-187  | 1    |
| 19  | Double Pulley Shaft                  | PCS-188  | 1    |
| 20  | M6x16x3 Washer                       | PCS-189  | 1    |
| 21  | M6 Lock Washer                       | PCS-190  | 1    |
| 22  | M6x1.0x30 Socket Cap Screw           | PCS-191  | 1    |
| 23  | Retraction Guide                     | PCS-192  | 1    |
| 24  | Retraction Bracket                   | PCS-193  | 1    |
| 25  | M8x16x2 Washer                       | PCS-194  | 1    |
| 26  | Retraction Spring                    | PCS-195  | 1    |
| 27  | M6x1x33 Hex Head Shoulder Screw      | PCS-196  | 1    |
| 28  | M8x1.25x16 Button Head Socket Screw  | PCS-197  | 2    |
| 29  | M12 Brake Positioning Bolt           | PCS-198  | 1    |
| 30  | Brake Positioning Bolt O-Ring        | PCS-199  | 1    |
| 31  | Brake Positioning Spring             | PCS-200  | 1    |
| 32  | M12x1.75 Lock Nut                    | PCS-201  | 1    |
| 33  | Arbor Belt                           | PCS-202  | 1    |
| 34  | Motor Belt                           | PCS-203  | 1    |
|     | Motor Belt (50 Hz motors only)       | PCS-263  |      |
| 35  | Cartridge Cable                      | PCS-204  | 1    |
| 36  | Cartridge Bracket                    | PCS-205  | 1    |
| 37  | M6x1.0x12 Button Head Shoulder Screw | PCS-206  | 1    |
| 38  | Threaded Pin                         | PCS-207  | 1    |
| 39  | M8x20x2 Washer                       | PCS-208  | 1    |
| 40  | M8x1.25 Lock Nut (silver zinc)       | PCS-209  | 1    |
| 41  | M4x0.7x20 Flat Head Socket Screw     | PCS-210  | 2    |



## Arbor Assembly Parts List (cont.)

| No. | Description  | Part No.                  | Qty. |
|-----|--|---------------------------|------|
| 42  | Cartridge Bracket Spacer                               | PCS-211                   | 2    |
| 43  | M4x14x1 Washer   | PCS-212                   | 2    |
| 44  | M4x0.7 Lock Nut  | PCS-213                   | 2    |
| 45  | M5x0.8x8 Set Screw                                     | PCS-214                   | 2    |
| 46  | Brass Pressure Ring                                    | PCS-215                   | 1    |
| 47  | Brake Cartridge for 10" Blade                          | TSBC-10R2 or<br>TSBC-10R3 | 1    |
|     | Brake Cartridge for 8" Dado Set                        | TSDC-8R2 or<br>TSDC-8R3   |      |
|     | Brake Cartridge for 8" Dado Sets                       |                           |      |
| 48  | Brake Cartridge Key                                    | PCS-217                   | 1    |
| 49  | Blade Spacing Attention Tag                            | PCS-218                   | 1    |
| 50  | M5x0.8x8 Pan Head Phillips Screw (with M5 lock washer) | PCS-219                   | 2    |

# Blade Guard and Miter Gauge Exploded View



## Blade Guard and Miter Gauge Parts List

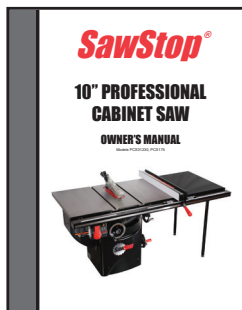
| No. | Description  | Part No.   | Qty. |
|-----|--|------------|------|
|     | Blade Guard Assembly                                   | TSG-DC     | 1    |
| 1   | Guard Shell Left Half                                  | TSG-DC-001 | 1    |
| 2   | Guard Shell Right Half                                 | TSG-DC-002 | 1    |
| 3   | M3x1.06x8 Pan Head Phillips Screw                      | TSG-DC-003 | 7    |
| 4   | M4x1.6x8 Pan Head Phillips Screw                       | TSG-DC-004 | 2    |
| 5   | M4x16x3 Polycarbonate Custom Washer                    | TSG-DC-005 | 2    |
| 6   | Inner Left Guard Shell Extension                       | TSG-DC-006 | 1    |
| 7   | Inner Right Guard Shell Extension                      | TSG-DC-007 | 1    |
| 8   | Spreader   | TSG-DC-008 | 1    |
| 9   | Dust Collection Port Left Half                         | TSG-DC-009 | 1    |
| 10  | Dust Collection Port Right Half                        | TSG-DC-010 | 1    |
| 11  | M6x16x1 Washer   | TSG-DC-011 | 2    |
| 12  | Small Anti-Kickback Pawl Left                          | TSG-DC-012 | 1    |
| 13  | Small Anti-Kickback Pawl Right                         | TSG-DC-013 | 1    |
| 14  | Inner Left Pawl Spring                                 | TSG-DC-014 | 1    |
| 15  | Inner Right Pawl Spring                                | TSG-DC-015 | 1    |
| 16  | Large Anti-Kickback Pawl Left                          | TSG-DC-016 | 1    |
| 17  | Large Anti-Kickback Pawl Right                         | TSG-DC-017 | 1    |
| 18  | Pawl Bushing   | TSG-DC-018 | 2    |
| 19  | Outer Left Pawl Spring                                 | TSG-DC-019 | 1    |
| 20  | Outer Right Pawl Spring                                | TSG-DC-020 | 1    |
| 21  | M6x1.0x35 Button Head Socket Screw                     | TSG-DC-021 | 1    |
| 22  | M6x1.0 Hex Nut   | TSG-DC-022 | 2    |
| 23  | M8x54 Grooved Pin                                      | TSG-DC-023 | 1    |
| 24  | M8 E-Clip  | TSG-DC-024 | 2    |
| 25  | M6x1.0x16 Button Head Socket Screw                     | TSG-DC-025 | 1    |
| 26  | M4x0.7x10 Pan Head Phillips Screw                      | TSG-DC-026 | 4    |
| 27  | M4x0.7 Hex Nut   | TSG-DC-027 | 4    |
| 28  | Dust Collection Port Compression Spring                | TSG-DC-028 | 2    |
| 29  | M4x10 Spring Pin                                       | TSG-DC-029 | 1    |
| 30  | Blade Guard Warning Label                              | TSG-DC-030 | 1    |
| 46  | Limit Rod  | TSG-DC-032 | 1    |
| 47  | Limit Rod Bumper                                       | TSG-DC-033 | 1    |
| N/A | Replacement Guard Shell Assembly (items 1-7, 23-24,30) | TSG-DC-031 | 1    |
|     | Miter Gauge Assembly                                   | PCS-220    | 1    |
| 31  | 3/16-24NCx3/8" Phillips Head Screw                     | PCS-221    | 3    |
| 32  | Angle Indicator  | PCS-222    | 1    |
| 33  | Mounting Block   | PCS-223    | 1    |
| 34  | Indexing Pin   | PCS-224    | 1    |
| 35  | O-Ring   | PCS-225    | 1    |

# Blade Guard and Miter Gauge Parts List (cont.)

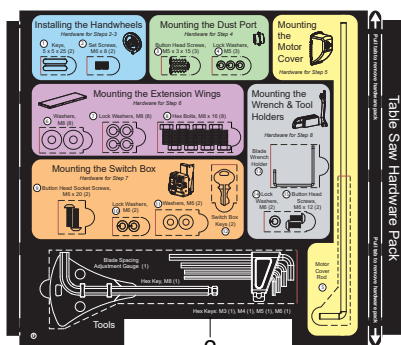
| No. | Description                      | Part No. | Qty. |
|-----|----------------------------------|----------|------|
| 36  | Miter Gauge Head                 | PCS-226  | 1    |
| 37  | 8-32 NCx5/8" Phillips Head Screw | PCS-227  | 3    |
| 38  | 8-32 NC Nut                      | PCS-228  | 3    |
| 39  | Miter Gauge Handle               | PCS-229  | 1    |
| 40  | M8x18x3 Washer                   | PCS-230  | 1    |
| 41  | Miter Gauge Bar                  | PCS-252  | 1    |
| 42  | Gauge Head Mounting Screw        | PCS-232  | 1    |
| 43  | M6x1.0x8 Pan Head Phillips Screw | PCS-233  | 1    |
| 44  | Retaining Disc                   | PCS-234  | 1    |
| 45  | M5x0.8x12 Spring Bearing         | PCS-251  | 3    |

# Literature, Hardware and Tools Parts List

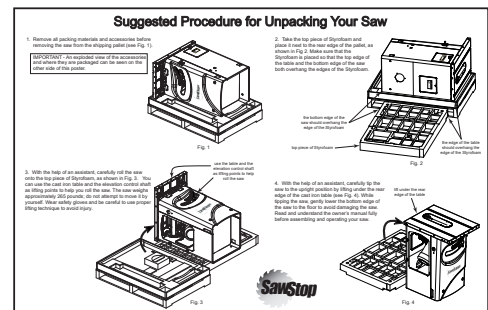
| No. | Description  | Part No. | Qty. |
|-----|--|----------|------|
| 1   | SawStop 10" Professional Saw Owner's Manual            | PCS-235  | 1    |
| 2   | Table Saw Hardware Pack                                | PCS-236  | 1    |
| 3   | Unpacking Procedure Poster                             | PCS-237  | 1    |
| 4   | Hex Key Tool Holder (includes M3, M4, M5, M6 hex keys) | PCS-238  | 1    |
| 5   | M8 Ball End Hex Key                                    | PCS-239  | 1    |
| 6   | Blade Spacing Adjustment Gauge                         | PCS-240  | 1    |
| 7   | Push Stick   | PCS-241  | 1    |



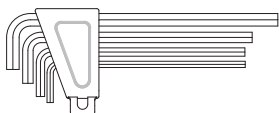
1



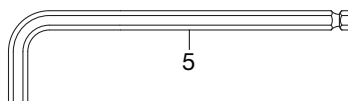
2



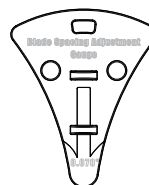
3



4



5



6



7





SawStop, LLC  
11555 SW Myslony Street  
Tualatin, Oregon 97062 USA  
[www.sawstop.com](http://www.sawstop.com)

Main Phone - (503) 570-3200  
Service - (503) 582-9934  
Fax - (503) 570-3303  
Email: [info@sawstop.com](mailto:info@sawstop.com)